

Access Statement The McArdle Chalet



Pre-Arrival

Large print brochures and accessible website, fax and e-mail are available.

Local information is available with details of accessible places to visit, restaurants, local shops, amenities and services.

It may be possible to arrange local electric wheelchair/ mobility scooter hire however notice is required and Calvert Trust Kielder cannot guarantee availability. We can accommodate independent arrangements but Calvert Trust Kielder cannot be held responsible for verifying delivery, collection, condition or damages.

Groceries can be pre-ordered from ASDA and Tesco online, please use postcode NE48 1BS and ensure the booking name is used on delivery; if booked via 3rd party please confirm with your booking reference, directly with Guest Services.

Courtesy tea, coffee, milk, and biscuits provided for your arrival.

Arrival and car parking Facilities

Guests Check-in at reception followed by show in at the chalet.

Adjacent parking to the chalet with turning area and space for 2 cars.



Paving slab path to chalet 1.2m wide, bordered with gravel to main door gradient better than 1:20.

Main Entrance

Front entrance clear open door width 910mm; PVCU door handle pull to open, with 10mm step door thresh leading onto welcome mat which extends 2 meters into the hallway. Outside light is manually switched from the hallway.

Clear open door width measured from door face at 90° to opposite door jamb.



Outdoor Space



Two sets of bi-fold doors lead out to the paved terrace area. Doors are 3 leafs wide, each leaf is 750mm wide. 25mm high slope thresh from lounge/dining to terrace. Terrace area affords views of Kielder Water & Forest Park and has outdoor furniture and hot tub. Binoculars, and a telescope to star gaze Northumberland's Dark Skies are provided.

Lounge and Dining

The building is single level with laminate flooring to an open plan living/dining/kitchen area with space for wheelchairs to manoeuvre. Rugs can be removed to aid mobility.

General window latch height is 1450mm with a security vent setting to allow additional ventilation without loss of security.

Sofa and chair height 420mm from floor, chaise lounge height 440mm from floor. Dining chair height 470mm from floor.



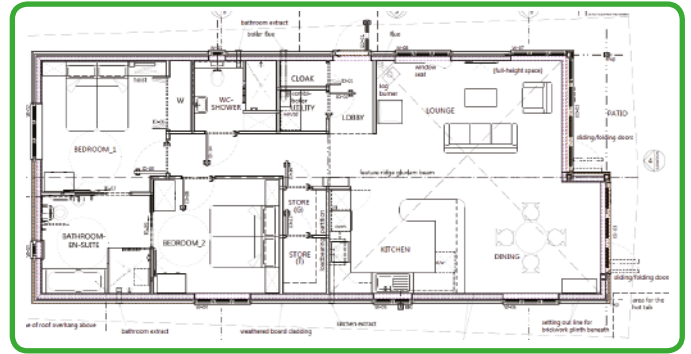
Kitchen

A modern designed kitchen with standard height worktop throughout, 925mm from floor, and low level fridge, freezer and dishwasher.

Oven handle height 1350mm from floor.



Floor Plan



Bedrooms

Bedrooms are accessed from the hallway 1150mm wide.

All bedding is non allergenic.

Master Bedroom



Standard double bedroom suitable for wheelchair users level M3I (independent) and M3A (assisted). Clear open door width 870mm, onto carpet flooring. Provides 1200mm turning space and unobstructed transfer space to bed on right hand side* of 1200mm.

The bed is equipped with an Integra lift hoist rated at 200Kg (31½ Stone) with loop sling lifting bar on the right hand side*.

*Right hand side - as you are looking from the foot of bed to headboard.

Slings are available from Guest Services (L, XL or XXL) or you can use your own if preferred.

Bed height is 450mm from floor.

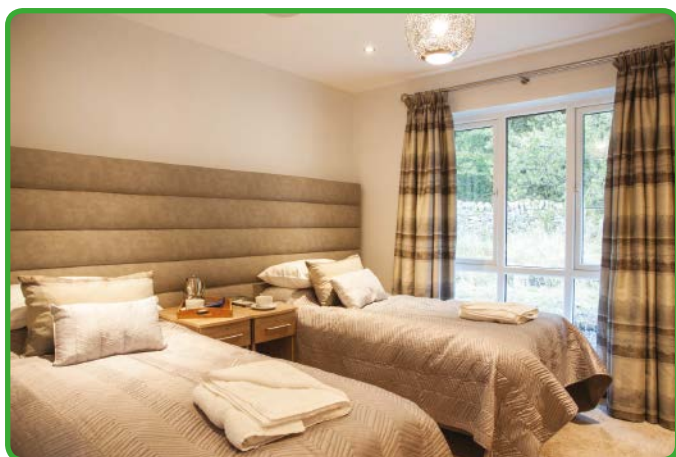
Wardrobe with sliding doors can accommodate various hanging rail heights to suit.



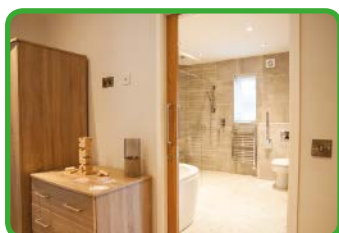
Access to Jack & Jill bathroom through sliding door, clear open door width 825mm

2nd Bedroom

Set up as a super king-size (6' x 6'3") bed or twin beds (2 x 3' x 6'3"). Bed height is 580mm from floor. Wardrobe and drawer units are free standing.



Access to Jack & Jill bathroom through sliding door with clear open door width 800mm.



Bathroom Jack & Jill

The bathroom can be accessed by both bedrooms through the sliding doors. Lights are switched from both rooms and both doors can be locked from the bathroom for privacy.

The bathroom features:

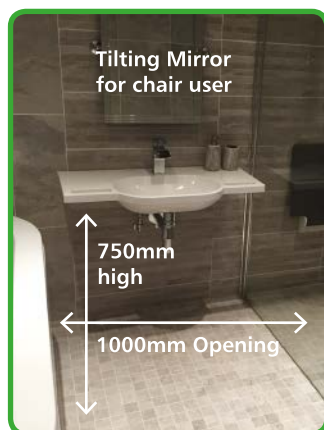
- Whirlpool bath with hair rinse attachment
- Accessible HEWI sink height 750mm from floor, 1000mm width, integral supports and wheelchair access.

Shower is level entry with deluge head and additional handset to dry side.

HEWI shower chair height 490mm from floor, shower riser grab rail from 1370mm to 1830mm height, horizontal and diagonal grab bars on the wall.

WC seat height 440mm from floor accommodates shower chair, seat riser is available, and HEWI grab bars to either side. Side transfer is from the left only.





Additional Information

Light Switches are 1000mm from floor level and sockets are 450mm from floor level.

Clinical waste disposal can be accommodated however you must use our bags and fill them correctly.

Shower chair is available, please inform us on booking. Assistance dog welcome; please have passport available upon check in.

Cot and high chair are available, please inform us on booking.

There are a range of activities available for all abilities with varying degrees of challenge. Specialist equipment is available for our activities to enable disabled people to enjoy the challenge of outdoor activities in the countryside.

Chalet guests have complimentary use of the hydrotherapy pool and are welcome to join in centre activities (additional fees may apply).

Shower Room

An additional shower room with sink and WC is accessed from the main hallway.

Clear open door width 875mm.
Sink height 840mm from floor.
WC height 440mm from floor.
Shower access 600mm wide.



Surrounding Site

All paths to the main centre are tarmac or paving and the centre is level entry. Some paths are made up of compacted stone and assistance may be required for some wheelchair users.



For further on-site access information please see:

Centre Access Statement

www.calvert-trust.org.uk/downloads/kielder/access-statement-centre-v-2.-aug-2015.pdf

Self-catering Access Statement

www.calvert-trust.org.uk/downloads/kielder/access-statementself-catering-may-2015.pdf

If you have any questions, please ask a member of our Guest Service Team.

Contact Information

Guest Services Team, Calvert Trust Kielder, Kielder Water & Forest Park, Hexham, Northumberland NE48 1BS
Tel 01434 250232 Fax 01434 250015
E-mail enquiries@calvert-kielder.com